

you can  
**Canon**

MULTIMEDIA PROJECTOR RANGE

**XEED**

BRIGHTER THINKING



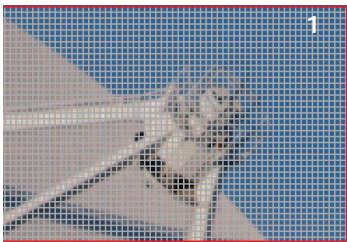


# The evolution of XEED.

The original XEED SX50 took the projector world by storm with its breakthrough resolution, brightness and contrast ... and its breakthrough size. XEED has now evolved into a complete range - with a projector to suit every application and every display environment.



- CONFERENCE VENUES
- EXHIBITION CENTRES
- BOARDROOMS AND MEETING FACILITIES
- PHOTOGRAPHY PROFESSIONALS
- GRAPHIC DESIGN INDUSTRY
- LARGE-SCALE PUBLIC DISPLAYS
- ENTERTAINMENT, NIGHTLIFE AND EVENTS INDUSTRY
- THEATRE AND SPECIAL EFFECTS



## SEAMLESS LCOS IMAGES

The distance between pixels in conventional LCD projectors results in images appearing as if covered in a fine mesh. With virtually no gaps between pixels in LCOS projectors, images produced are beautifully faithful and silky-smooth. And with LCOS panels, moving images are smooth and flicker-free.



## READ THE FINE PRINT

Professional presentations demand professional levels of fine detail, which is why the XEED SX6, XEED SX60 and XEED SX50 boast SXGA+ resolution. These projectors clearly display highly detailed images, such as CAD drawings, graphic designs, technical data and medical images.

## WORLD FIRST

For powerful presentations with high quality, seamless images, the XEED X600 provides a world first: LCOS projection with XGA resolution ... and an XGA price tag.

1. LCD technology  
2. XEED LCOS technology

# Revolutionary optical technology.



Overcoming the drawbacks of traditional LCOS projectors, which compromised brightness, contrast and size, Canon's pioneering AISYS (Aspectual Illumination System) technology allows the compact XEED range to set new projection standards.

## STUNNING BRIGHTNESS



With AISYS, the light path is optimised to prevent lamp light loss and provide ultra-powerful brightness. The XEED SX60 and XEED SX50 deliver 2500 lumens brightness – more than enough power to project clearly, even in well-lit environments. The XEED SX6 and XEED X600 achieve a stunning 3500 lumens – perfect for projection in all conditions, even large venues.

## OUTSTANDING CONTRAST

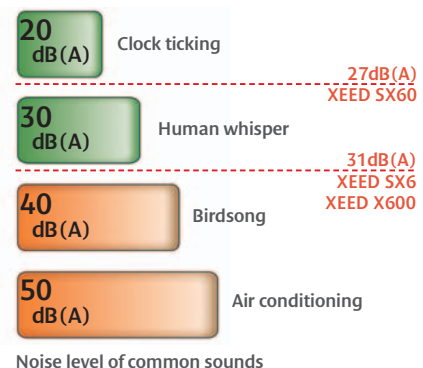
A drawback of traditional LCOS technology is its tendency to produce low contrast results. Supremely efficient AISYS technology allows XEED projectors to deliver an incredible 1000:1 contrast ratio for rich colours and true blacks. In Home Cinema Mode, the XEED SX60 boosts contrast to an outstanding 2000:1 ratio, yielding incredibly vibrant colours and deep, inky blacks – perfect for viewing movies in darkened rooms.

## COMPACT AND LIGHTWEIGHT

Canon's advanced AISYS technology dramatically reduces the focal length required within the optics of XEED projectors, allowing them to be significantly more compact than traditional LCOS models, and therefore lighter. The original XEED SX50 remains the most compact LCOS projector on the market today.

## KEEP IT QUIET

Advanced AISYS technology is more efficient, so less cooling is required, meaning that distracting fan noise is reduced. In Quiet Mode the XEED SX60 is virtually silent at a mere 27dBA, while the XEED SX6 and XEED X600 offer a Quiet Mode running at just 31dBA.



# Project the future.

## THE FUTURE IS HD

With High Definition television broadcasts set to take off across Europe, XEED projectors are at the ready to display HD images. The SXGA+ resolution of the XEED SX6, XEED SX60 and XEED SX50 means that these projectors can faithfully reproduce both 720p and 1080i High Definition images.

## PROFESSIONAL COLOUR ACCURACY

Designers and photographers can be certain that their colours are reproduced entirely accurately with the XEED SX6, which supports the Adobe RGB colour space.







# Making life easy.

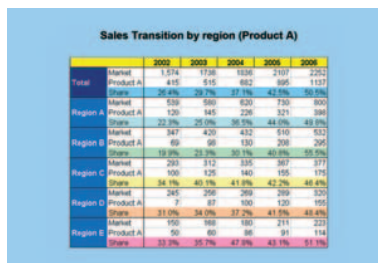
Thanks to advances in technology, the new XEED projectors are easier to use than ever, with greatly enhanced automatic features. You won't need a degree in computer science to get your presentations or movies working just the way you want them – the projectors do all the thinking for you.

## FLEXIBLE AND POWERED

Each XEED projector is equipped with a 1.7x zoom lens, allowing for flexible projector placement. The wide angle of the lens permits large image projection, even in small spaces. The models feature Canon motorised zoom lenses, which can be operated via the remote control.



Without Auto Focus and Keystone Correction



Focus and Keystone are adjusted automatically, in a matter of seconds

## AUTOMATIC INTELLIGENCE

A host of key functions are now automated in the XEED SX6, XEED SX60 and XEED X600, making set-up and operation a breeze.

With Auto Focus, the projector automatically sets its focus to the optimum position, taking into account throw distance and projection angle.

Keystone Correction in the vertical axis is automatic, rectifying distortion up to +/- 20 degrees.

Auto Screen Colour Correction automatically compensates for the colour of the projection surface to to effortlessly deliver a perfect image with natural-looking colours.

Auto Input selection means the projector detects the active input terminal and configures itself accordingly.

Frame Lock is also automatic, ensuring correct synchronisation when using a computer to display fast animation.



# Complete Connectivity.

With XEED's advanced connectivity it's easy to connect and project.

The advanced connectivity available with XEED projectors means you can easily connect and project images from just about any source you might think of – whether it's a laptop computer, DVD player, satellite television decoder, digital camcorder or even the latest games console. The DVI terminal ensures that image signals from digital sources – including the

latest High-Definition equipment – are reproduced perfectly. The XEED SX6, XEED SX60 and XEED X600 support the HDCP standard, so encrypted material can be viewed. The dedicated RGB output makes presenters' lives easier by allowing an external prompt monitor to be connected to the projector.

## VIDEO INPUT AND OUTPUT

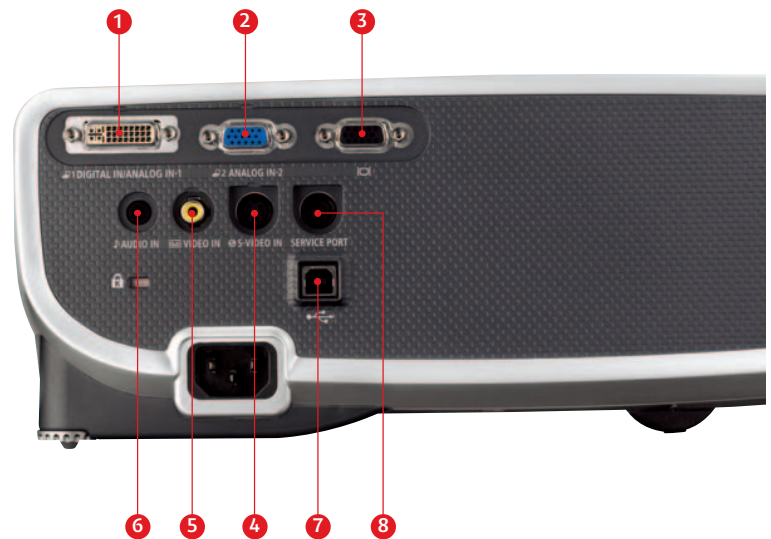
- 1. DVI-I 29-pin**  
Digital RGB / Digital Video /  
Analogue RGB Input 1
- 2. Mini D-sub 15-pin**  
Analogue RGB Input 2  
(Component / SCART via adapter cable)
- 3. Mini D-sub 15-pin**  
Analogue RGB (Monitor) Output
- 4. Min-DIN 4-pin**  
S-Video Input
- 5. RCA x 1**  
Composite Video Input

## AUDIO INPUT

- 6. 3.5mm<sup>2</sup> mini-jack**  
Stereo Audio Input

## PROJECTOR CONTROL

- 7. USB Type B**  
Mouse Control
- 8. Mini-DIN 8-pin**  
Service Port



# Accessories.

Canon's genuine projector accessories include a remote control unit and various input and output cables for connection to different Audio-Visual devices or for use with the wireless mouse function. An optional ceiling mounting bracket is also available for more permanent projector installation, and an optional network adapter allows control and monitoring of your projector from the convenience of your computer desktop.

## OPTIONAL ACCESSORIES



Replacement Lamp



Ceiling Attachment



SCART Cable

## INBOX ACCESSORIES



Remote Control



Soft Case



DVI-I Computer Connection Cable



Component Video Cable



AC Mains Power Cable



USB Cable



## XEED SX6

As the flagship model, the XEED SX6 is the ultimate projector for maximum quality, high impact presentations. LCOS technology combines with SXGA+ resolution and Canon's unique AISYS optical system to provide detailed, seamless projection with an incredible brightness of 3,500 lumens.

- Astounding detail, with native SXGA+ resolution and full HD compatibility
- Ultra-bright images with Canon's superior AISYS optical system and 3,500 lumens
- Seamless high-definition images and clean video performance with LCOS display technology
- High 1000:1 contrast ratio for vivid images and deep colours
- Near-silent operation, just 31dBA in Quiet Mode
- Flexible projector placement with wide angle 1.7x powered zoom lens
- Auto Focus and Auto Input Selection
- Automatic Keystone Correction ensures image edges stay parallel
- Auto Screen Colour Correction for natural image colours when projecting onto coloured surfaces
- HDCP-enabled DVI-I port for pin-sharp images from digital sources, including encrypted content



## XEED SX60

The XEED SX60 delivers bright, high contrast projection for crystal clear presentations and video playback. With SXGA+ resolution, near-silent operation and a dedicated Home Cinema mode, it will appeal to business users and movie enthusiasts alike.

- Incredible detail with native SXGA+ resolution and full HD compatibility
- Bright images with Canon's superior AISYS optical system and 2,500 lumens
- Seamless high-definition images and clean video performance with LCOS technology
- High 1000:1 contrast ratio for vivid images (increasing to 2000:1 in Home Cinema mode)
- Virtually silent operation, just 27dBA in Quiet Mode
- Flexible projector placement with wide angle 1.7x powered zoom lens
- Auto Focus, Auto Input Selection and Auto Keystone Correction
- Auto Screen Colour Correction for natural image colours when projecting onto coloured surfaces
- HDCP-enabled DVI-I port for pin-sharp images from digital sources, including encrypted content







## XEED SX50

In a triumph of miniaturisation, Canon's engineers developed the world's first truly portable SXGA+ resolution projector. With a compact form rivalling that of many XGA projectors, the XEED SX50 represents a breakthrough in modern business presentations.

- Incredible detail with SXGA+ resolution (1400 x 1050 pixels)
- Bright, high-contrast images from Canon's unique AISYS optical system, yielding 2,500 lumens
- Seamless high-definition images and clean video performance with LCOS technology
- High 1000:1 contrast ratio for vivid images
- Low operating noise, 34dBA in Quiet Mode
- Wide angle lens for large images even in small rooms
- Flexible projector placement with 1.7x zoom
- Vertical and Horizontal Keystone Correction ensures that image edges stay parallel, regardless of projector placement
- Connects to DVD and HD sources, with DVI-I port and RGB out for external monitor connection
- World's smallest and lightest LCOS projector, weighing just 3.9 kilograms



## XEED X600

As the world's first projector to feature the astounding clarity of LCOS technology combined with XGA resolution, the XEED X600 projects superior quality, high-brightness images from a petite frame.

- Superb detail and seamless images with LCOS technology and XGA resolution
- Ultra-bright images with Canon's superior AISYS optical system and 3,500 lumens
- High 1000:1 contrast ratio for vivid images
- Near-silent operation, just 31dBA in Quiet Mode
- Flexible projector placement with wide angle 1.7x powered zoom lens
- Auto Focus and Auto Input Selection
- Automatic Keystone Correction ensures image edges stay parallel
- Auto Screen Colour Correction for natural colours when projecting onto coloured surfaces
- HDCP-enabled DVI-I port for pin-sharp images from digital sources, including encrypted content



# Specifications

				
<b>MULTIMEDIA PROJECTOR</b>				
<b>Product Name</b>	<b>XEED SX6</b>	<b>XEED SX60</b>	<b>XEED SX50</b>	<b>XEED X600</b>
<b>Product Class</b>	Ultra-Portable	Ultra-Portable	Ultra-Portable	Ultra-Portable
<b>LCD PANEL</b>				
<b>Type</b>	LCOS Reflective Display, TFT Active Matrix	LCOS Reflective Display, TFT Active Matrix	LCOS Reflective Display, TFT Active Matrix	LCOS Reflective Display, TFT Active Matrix
<b>Size and Number</b>	0.7" diagonal, 3 panels	0.7" diagonal, 3 panels	0.7" diagonal, 3 panels	0.7" diagonal, 3 panels
<b>Aspect Ratio</b>	4:3	4:3	4:3	4:3
<b>Native Resolution</b>	1400 x 1050 (SXGA+), 1470000 pixels	1400 x 1050 (SXGA+), 1470000 pixels	1400 x 1050 (SXGA+), 1470000 pixels	1024 x 768 (XGA), 786432 pixels
<b>OPTICS</b>				
<b>Light Source</b>	270W NSH lamp	180W NSH lamp	200W NSH lamp	270W NSH lamp
<b>Lens F Number and Focal Length</b>	F1.85 - F2.5; f=21.7 - 35.8mm	F1.85 - F2.5; f=21.7 - 35.8mm	F1.85 - F2.5; f=22.0 - 37.0 mm	F1.85 - F2.5; f=21.7 - 35.8mm
<b>Zoom Magnification and Control</b>	1.7x Motorised	1.7x Motorised	1.7x Manual	1.7x Motorised
<b>Focus Control</b>	Motorised Auto Focus	Motorised Auto Focus	Manual Focus	Motorised Auto Focus
<b>Lens Shift</b>	9:1, fixed	9:1, fixed	9:1, fixed	9:1, fixed
<b>IMAGE AND AUDIO</b>				
<b>Brightness</b>	3,500 lumens	2,500 lumens	2,500 lumens	3,500 lumens
<b>Uniformity</b>	88%	88%	85%	88%
<b>Contrast Ratio</b>	1000:1 (full on / full off)	1000:1 (full on / full off) 2000:1 (full on / full off) in Home Cinema Mode	1000:1 (full on / full off)	1000:1 (full on / full off)
<b>Projection Distance Coverage</b>	1.2m - 9.0m (3.0m - 4.9m for 100" image)	1.2m - 9.0m (3.0m - 4.9m for 100" image)	1.2m - 9.1m (3.0m - 5.0m for 100" image)	1.2m - 9.0m (3.0 - 4.9m for 100" image)
<b>Screen Size</b>	40" - 300" (81 x 61cm - 610 x 457cm)	40" - 300" (81 x 61cm - 610 x 457cm)	40" - 300" (81 x 61cm - 610 x 457cm)	40" - 300" (81 x 61cm - 610 x 457cm)
<b>Digital Zoom Magnification</b>	1x - 12x	1x - 12x	1x - 12x	1x - 12x
<b>Keystone Correction Range</b>	Vertical: +/- 20° (Auto / Manual) Horizontal: +/- 20° (Manual)	Vertical: +/- 20° (Auto / Manual) Horizontal: +/- 20° (Manual)	Vertical: +/- 20° (Manual) Horizontal: +/- 20° (Manual)	Vertical: +/- 20° (Auto / Manual) Horizontal: +/- 20° (Manual)
<b>Digital RGB Compatibility</b>	D-SXGA+ / D-WXGA / D-SXGA / D-XGA / D-SVGA / D-VGA	D-SXGA+ / D-WXGA / D-SXGA / D-XGA / D-SVGA / D-VGA	D-SXGA+ / DSXGA / D-XGA / D-SVGA / D-VGA	D-XGA / D-SVGA / D-VGA
<b>Analogue RGB Compatibility</b>	UXGA (compressed) / SXGA+ / WXGA / SXGA / XGA / SVGA / VGA	UXGA (compressed) / SXGA+ / WXGA / SXGA / XGA / SVGA / VGA	UXGA (compressed) / SXGA+ / SXGA / XGA / SVGA / VGA	UXGA (compressed) / SXGA+ (compressed) / WXGA (compressed) / SXGA (compressed) / XGA / SVGA / VGA
<b>Video Colour Systems</b>	PAL / PAL-M / PAL-N / NTSC / NTSC4.43 / SECAM	PAL / PAL-M / PAL-N / NTSC / NTSC4.43 / SECAM	PAL / PAL-M / PAL-N / NTSC / NTSC4.43 / SECAM	PAL / PAL-M / PAL-N / NTSC / NTSC4.43 / SECAM
<b>HD / Component Scan Systems</b>	1080i / 1035i / 720p / 575p / 575i / 480p / 480i	1080i / 1035i / 720p / 575p / 575i / 480p / 480i	1080i / 1035i / 720p / 575p / 575i / 480p / 480i	1080i / 1035i / 720p / 575p / 575i / 480p / 480i
<b>Horizontal Video Resolution</b>	550 TV lines	550 TV lines	550 TV lines	550 TV lines
<b>Scanning Frequency</b>	Horizontal: 15-100kHz, Vertical: 50-100Hz, Clock: 170MHz	Horizontal: 15-100kHz, Vertical: 50-100Hz, Clock: 170MHz	Horizontal: 15-100kHz, Vertical: 50-100Hz, Clock: 170MHz	Horizontal: 15-100kHz, Vertical: 50-100Hz, Clock: 170MHz
<b>Display Modes</b>	Standard, Presentation, Movie & Photo, Adobe RGB, sRGB	Standard, Presentation, Movie, Home Cinema, sRGB	Standard, Presentation, Cinema, sRGB	Standard, Presentation, Movie, sRGB
<b>Image Enhancement Options</b>	12-bit Digital Gamma Correction, 6-axis Colour Adjust	12-bit Digital Gamma Correction, 6-axis Colour Adjust	Digital Gamma Correction, 6-axis Colour Adjust	12-bit Digital Gamma Correction, 6-axis Colour Adjust
<b>Built-In Audio</b>	1.0W RMS, Monaural	1.0W RMS, Monaural	1.0W RMS, Monaural	1.0W RMS, Monaural
<b>CONNECTORS</b>				
<b>Digital RGB / Digital Video Input / Analogue RGB Input 1</b>	DVI-I 29-pin (HDCP compatible)	DVI-I 29-pin (HDCP compatible)	DVI-I 29-pin (HDCP not supported)	DVI-I 29-pin (HDCP compatible)
<b>Analogue RGB Input 2</b>	Mini D-Sub 15-pin	Mini D-Sub 15-pin	Mini D-Sub 15-pin	Mini D-Sub 15-pin
<b>Analogue RGB Output</b>	Mini D-Sub 15-pin	Mini D-Sub 15-pin	Mini D-Sub 15-pin (shared with RGB Input 2)	Mini D-Sub 15-pin
<b>Component Video Input</b>	Via 3 x RCA adaptor cable (supplied)	Via 3 x RCA adaptor cable (supplied)	Via 3 x RCA adaptor cable (supplied)	Via 3 x RCA adaptor cable (supplied)
<b>S-Video Input</b>	Mini-DIN 4-pin	Mini-DIN 4-pin	Mini-DIN 4-pin	Mini-DIN 4-pin
<b>Composite Video Input</b>	RCA x 1	RCA x 1	RCA x 1	RCA x 1
<b>Audio Input</b>	3.5mm <sup>2</sup> stereo mini-jack	3.5mm <sup>2</sup> stereo mini-jack	3.5mm <sup>2</sup> stereo mini-jack	3.5mm <sup>2</sup> stereo mini-jack
<b>Mouse Control</b>	USB Type B	USB Type B	USB Type B	USB Type B
<b>Service Port / Projector Control</b>	Mini-DIN 8-pin	Mini-DIN 8-pin	Mini-DIN 8-pin	Mini-DIN 8-pin
<b>MECHANISMS</b>				
<b>Front Elevation Mechanism</b>	One-touch mechanical foot	One-touch mechanical foot	One-touch mechanical foot	One-touch mechanical foot
<b>Maximum Elevation Angle</b>	11.9°	11.9°	10.0°	11.9°
<b>RATINGS</b>				
<b>Dimensions (W x H x D)</b>	266 x 114 x 336mm	266 x 114 x 336mm	284mm x 96mm x 286mm	266 x 114 x 336mm
<b>Weight</b>	4.7kg	4.6kg	3.9kg	4.7kg
<b>Rated Supply Voltage</b>	100V - 240V AC, 50/60Hz	100V - 240V AC, 50/60Hz	100V - 240V AC, 50/60Hz	100V - 240V AC, 50/60Hz
<b>Power Consumption</b>	Normal Mode: 355W / Quiet Mode: 290W / Standby: 7W	Normal Mode: 250W / Quiet Mode: 225W / Standby: 7W	Normal Mode: 290W / Quiet Mode: 240W / Standby: 6W	Normal Mode: 355W / Quiet Mode: 290W / Standby: 7W
<b>Noise Level</b>	Normal Mode: 35dBA / Quiet Mode: 31dBA	Normal Mode: 30dBA / Quiet Mode: 27dBA	Normal Mode: 37dBA / Quiet Mode: 34dBA	Normal Mode: 35dBA / Quiet Mode: 31dBA
<b>Operating Environment</b>	+5°C to +35°C	+5°C to +35°C	+5°C to +35°C	+5°C to +35°C
<b>Storage Environment</b>	-30°C to +60°C	-30°C to +60°C	-10°C to +60°C	-30°C to +60°C
<b>Warranty</b>	3 years (90 days for lamp)	3 years (90 days for lamp)	3 years (90 days for lamp)	3 years (90 days for lamp)

Some images are simulated for clarity of reproduction. All data is based on Canon standard testing methods except where indicated. Specifications are subject to change without notice. ™ and ®: All company and/or product names are trademarks and/or registered trademarks of their respective manufacturers in their markets and/or countries.

To learn more about the XEED multimedia projector range visit [www.canon-europe.com/xeed](http://www.canon-europe.com/xeed)

you can  
**Canon**

Canon Inc  
[www.canon.com](http://www.canon.com)

Canon Europa NV  
[www.canon-europe.com](http://www.canon-europe.com)

© Canon Europa NV 2006

